



## Persson Invest

AB Persson Invest is a conglomerate, family owned investment company with its head-office in Östersund, Sweden. Total turnover is 4 billion Swedish Crowns (SEK) and the group employs about 1000 people.

Locations in Sweden are from Uppsala/Västerås, in mid-Sweden around Östersund/Umeå and the northernmost part with Gällivare and Kiruna. Also in mid-Norway with the base in Trondheim.

The company was founded in 1932 when Sven Persson started as a Volvo dealer. In 2013 the Volvo dealerships for both cars, trucks and buses represented more than 90% of the turnover.

Other lines of business are: Planing of wood, partly owned sawmill, Real Estate and management of own forests.

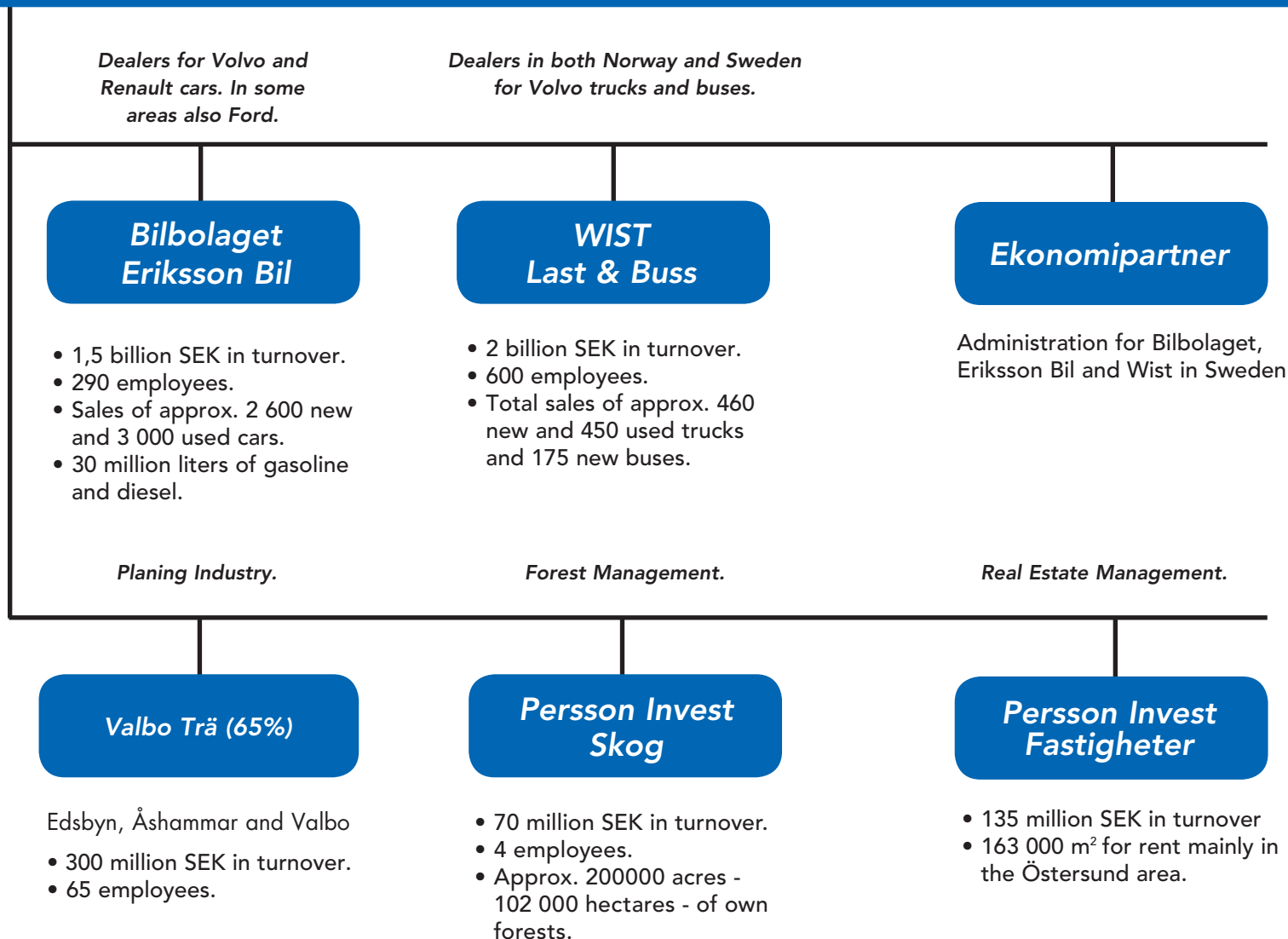
## Income Statement

AB Persson Invest - group. (MSEK)	2013	2012
<b>Operating income</b>		
Net sales	4 170	3 978
Change in inventories of finished goods	-11	12
Other operating income	7	64
	<b>4 166</b>	4 054
<b>Operating expenses</b>		
Raw materials and consumables	-257	-265
Goods for resale	-2 709	-2 577
Other external costs	-315	-282
Personnel costs	-592	-561
Depreciation	-119	-115
	<b>174</b>	254
<b>Result from financial investments</b>		
Financial income	54	51
Financial expenses	-32	-40
	<b>196</b>	265
<b>Profit after financial items</b>		
Taxes	-46	-46
Minority interest	-3	-3
	<b>147</b>	216

## Balance Sheet

AB Persson Invest - group. (MSEK)	2013	2012
<b>Assets</b>		
Intangible assets	48	45
Tangible assets	1 692	1 673
Financial assets	840	855
Current assets	1 460	1 199
<b>Total assets</b>	<b>4 040</b>	3 772
<b>Equity and liabilities</b>		
Shareholders equity	2 002	1 913
Minority share of equity	22	21
Provisions	238	231
Long-term liabilities	386	318
Current liabilities	1 392	1 289
<b>Total equity and liabilities</b>	<b>4 040</b>	3 772
<b>KEY RATIOS</b>		
EBIT	174	254
EBITDA	293	369
Return on:		
total capital (%)	6	8
shareholders equity (%)	8	12
capital employed (%)	7	10
Equity ratio (%)	50	51
Net investments (MSEK)	120	175
Average number of employees	1 026	980

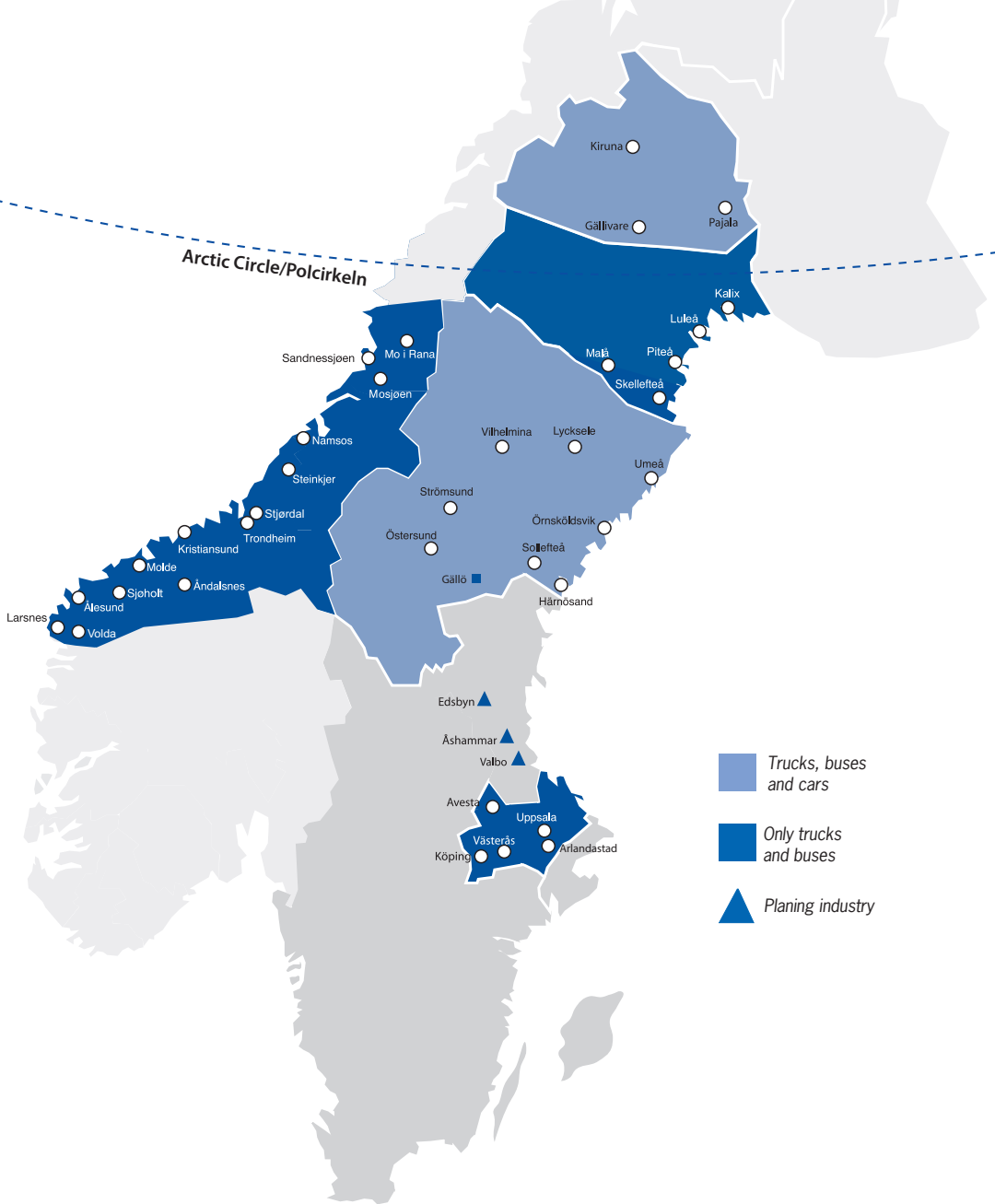
As of April 2014



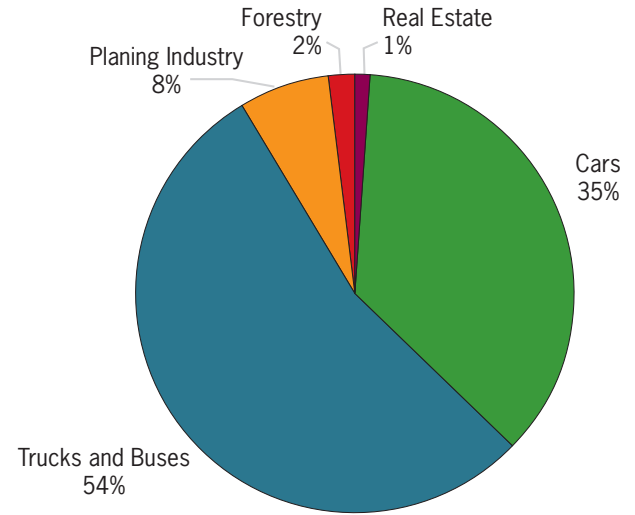
**Associated companies:**

Gällö Timber	50 %
NHP Östersund	50 %
JP Vind	50 %

# Locations for Persson Invest as of April 2014



## GROUP TURNOVER 2013



## VALUE OF THE ASSETS ACCORDING TO BALANCE SHEET 2013-12-31

